

**Industrie.Zero –  
new technologies  
for sustainable  
SMEs**

**it's owl**

## Industrie.Zero - new technologies for sustainable SMEs

---

Climate protection and sustainability, scarce resources and uncertain energy supplies, geopolitical changes and a shortage of skilled workers: industry is facing major challenges. In the Leading-Edge Cluster it's OWL - Intelligent Technical Systems OstWestfalenLippe, we are developing solutions to these challenges.

In our network, over 200 companies, research institutions and organisations are tapping the potential of new technologies to make companies fit for the future. Awarded in the Leading-Edge Cluster Competition of the Federal Ministry of Education and Research, it's OWL is considered one of the largest initiatives for Industrie 4.0 in SMEs.

Over the past ten years, we have developed solutions and applications in more than 130 projects. Our main topics are machine intelligence, new business models, intelligent product development and the future of work. In some 350 transfer projects, small and medium-sized enterprises have applied technologies from the network to their own business.

With our competences and experience in the field of digitalisation, we are now developing our strategy further. Under the title 'Industrie.Zero', we are making the OstWestfalenLippe region a lighthouse region for sustainable value creation. To this end, we develop new technologies and applications with the support of the state of North Rhine-Westphalia. For the reduction of CO2 emissions and circular value creation. For intelligent energy supply and sustainable product development. And for new forms of skilled labour development.

it's OWL. This is what OstWestfalenLippe is about. Innovative companies. Application-oriented cutting-edge research. A strong network with a high culture of cooperation.

**We are moving forward. Are you going to join us?**

# Who understands the consequences of digitalisation for your workplace?

**it's owl**



How can we use artificial intelligence to improve working conditions and qualify employees? What new professions and fields of activity are emerging? With the Competence Centre Arbeitswelt.Plus and other projects, we provide answers. The Technology-Network: Intelligent Technical Systems OstWestfalenLippe.Germany.

# Industrie.Zero

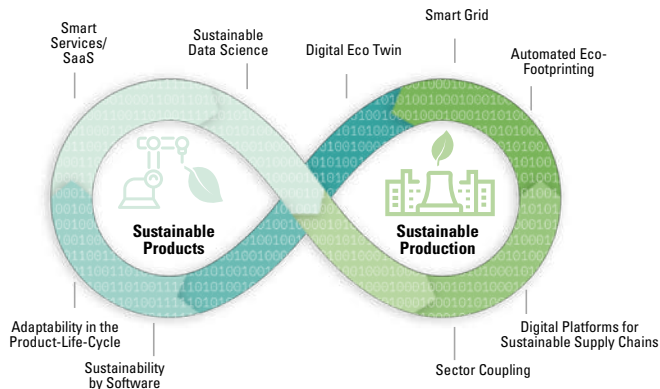
By 2030, sustainability and corporate success will have become one and the same thing. After all, market potential for sustainable products is high, as sustainability is an important criterion for purchasing decisions. Climate protection, reputational damage, supply chain failures and legal requirements are forcing companies to act. Also, for junior staff, sustainability plays a decisive role in their choice of employer.

With 'Industrie.Zero', the Leading-Edge Cluster it's OWL is pursuing a dual strategy for sustainable value creation through Intelligent Technical Systems: companies develop intelligent products for sustainable use – and they use intelligent production processes for sustainable value creation. Sustainability thus becomes the foundation for corporate success.

In doing so, we pursue the following mission:

- **Zero emissions** - reducing CO2 equivalents to zero
- **Zero waste** - expanding circular value creation
- **Zero loss of competitiveness** - driving sustainable success
- **Zero leaving behind** - full employment and people-centred work
- **Zero dependencies** - reliable supply and delivery systems
- **Zero solo efforts** - promoting a culture of cooperation

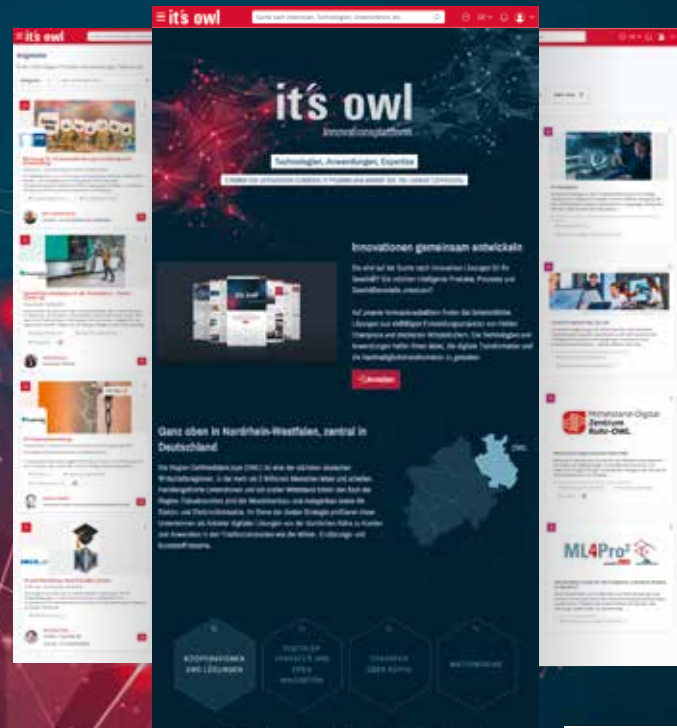
In our projects, we develop technologies, solutions and applications in the thematic fields listed below, which we make available via tech transfer services and our innovation platform.



Industrie.Zero: Interaction and topics of the dual transformation.

# Who offers a platform for your innovations?

it's owl



[plattform.its-owl.de](https://plattform.its-owl.de)

On our innovation platform, we make technologies, applications and experiences from our projects available and offer a space for exchange and cooperation. The Technology-Network: Intelligent Technical Systems OstWestfalenLippe.Germany.

## Services for companies

---

- Apply results from the Leading-Edge Cluster to your company in projects together with a research institution.
- Find out about new research approaches and solutions for Industrie.Zero at our events and workshops.
- Experience new technologies and applications for the factory of the future in our demonstration centres.
- Use the it's OWL innovation platform to get an overview of results from the projects and to network with cluster partners.

For more information, visit  
[www.its-owl.com](http://www.its-owl.com)



# Who provides you with global leaders for your career?

**it's owl**



As a Leading-Edge Cluster with over 200 high-tech businesses and close links to research, we provide the ideal platform for future careers and technology-related jobs. The Technology-Network: Intelligent Technical Systems OstWestfalenLippe.Germany.

# it's OWL Association

## COMPANIES



## UNIVERSITIES AND RESEARCH INSTITUTES



## TRANSFER PARTNERS



## SPONSOR MEMBERS

More than 150 sponsor members – particularly SMEs – are utilising the Leading-Edge Cluster's range of services to network and get their businesses ready for digital transformation. Interested companies, research institutes and business-related organisations from OstWestfalenLippe are more than welcome to get involved with the Leading-Edge Cluster and join the association.

# Who links you up with specialists for digitisation?

## it's owl



We answer key questions of digital transformation and develop solutions for SMEs together with specialists from 200 companies and research institutions. The Technology-Network: Intelligent Technical Systems OstWestfalenLippe.Germany.

## **it's OWL Clustermanagement GmbH**

Zukunftsmeile 2 | 33102 Paderborn

Phone 0049 5251 297370

[info@its-owl.de](mailto:info@its-owl.de) | [www.its-owl.com](http://www.its-owl.com)

Chair of the Cluster Board: Dr. Stefan Breit, Frank Maier,  
Prof. Dr. Ingeborg Schramm-Wölk

Managing Directors: Prof. Dr. Roman Dumitrescu, Günters Korder

Sponsored by

Ministerium für Wirtschaft,  
Industrie, Klimaschutz und Energie  
des Landes Nordrhein-Westfalen



The region

**OWL OstWestfalenLippe**  
Eine Region. Ein Wort.